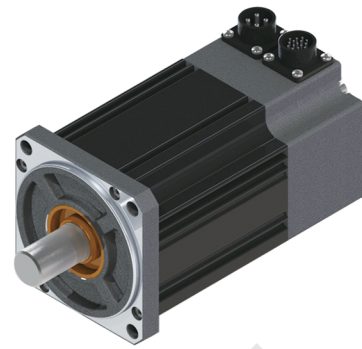


### SM86系列伺服电机 SM86 Series servo motor

运行径向负载 (N) Operating radial load	392
运行轴向负载 (N) Operating axial load	147

备注：径向负载为在轴伸1/2处  
Radial load point is the 1/2 shaft output



#### 产品性能参数(Electrical specification):

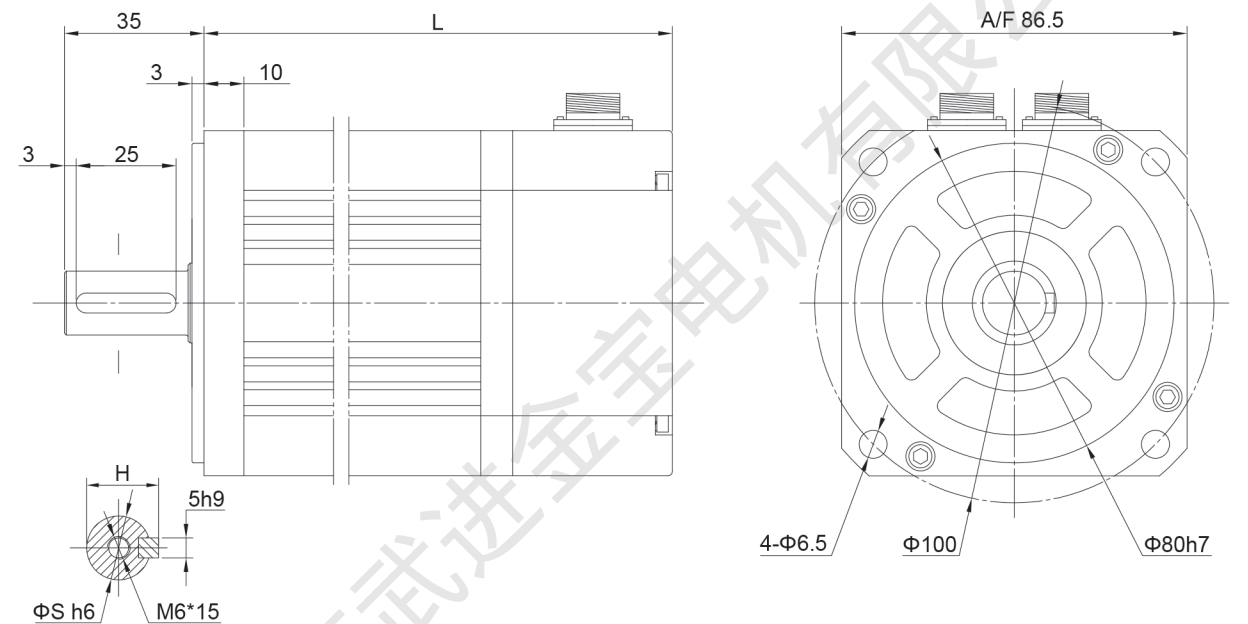
电机型号 Parameter	SM86															
	-02430	-03520	-04025													
额定功率 Rated power (KW)	0.75	0.73	1.0													
额定运行电压 Rated Voltage(3Φ VAC)	220	220	220													
额定电流 Rated current (A)	3	3	4													
额定转速 Rated speed (rpm)	3000	2000	2500													
额定转矩 Rated torque (N.m)	2.39	3.50	4.00													
峰值转矩 Peak torque (N.m)	7.1	10.5	12													
反电势常数 Voltage constant (V/Krpm)	51	67	60													
转矩常数 Torque constant (N.m/A)	0.8	1.2	1.0													
转子惯量 Rotor inertia (× 10 <sup>-4</sup> Kg.m <sup>2</sup> )	2.45	3.40	3.70													
电子时间常数 Electrical time onstant (ms)	2.2	2.39	2.3													
电机重量 Motor weight (Kg)	3.40	3.80	4.13													
编码器线数 Encoder resolution( PPR)	2500	2500	2500													
绝缘等级 Insulation class	F	F	F													
防护等级 Protection class	IP65	IP65	IP65													
使用环境要求 Service environment	环境温度：-20~+50℃ Operating ambient temperature:		环境湿度：相对湿度<90%(无结霜) Operating ambient humidity :below 90%RH,No freezing													
绕组航插定义 Power plugs definition	管脚功能 Pin function	U	V	W	PE											
	管脚编号 Pin number	2	3	4	1											
编码器航插定义 Signal plugs definition	管脚功能 Pin function	5V	0V	A+	B+	Z+	A-	B-	Z-	U+	V+	W+	U-	V-	W-	PE
	管脚编号 Pin number	2	3	4	5	6	7	8	9	10	11	12	13	14	15	1
航插规格 Plug model	绕组插件型号:YD18J4Z-E Power plugs model: YD18J4Z-E				编码器插件型号: YD18J15Z-E Signal plugs model:YD18J15Z-E											

以上产品可按客户要求进行出轴规格、信号反馈元件类别、参数及相关配件定制  
Above products can be customized according to customer requirement.

#### 外形尺寸(Dimension):

Item	Model	SM86 -02430	SM86 -03520	SM86 -04025
L (mm)		149	171	181
S (mm)		16	16	16
H (mm)		18	18	18
W (mm)		5	5	5

#### 外形图(Outline drawing):



#### 安装注意事项(Installation precaution):

1. 安装或拆卸电机时，不得敲击电机及转轴，以免损坏编码器；
  2. 尽量防止轴座的振动，以免损坏轴承；
  3. 电机与驱动器须正确可靠连接，以免损坏电机和编码器；
  4. 装配时，须确保电机轴和负载轴的同轴，以免损坏电机
- 1.Never hit the servo motor or shaft, especially when coupling or disassembly the servo motor to machine, the encoder may become faulty;
  - 2.striving to make the best of its shaft to prevent vibration and bearing damage;
  - 3.The motor and amplifier must be connected to be correct and reliable, so as not to damage motor and encoder;
  - 4.When installing the motor, must ensure that motor shaft and load shaft concentric, so as not to damage the motor and encoder.