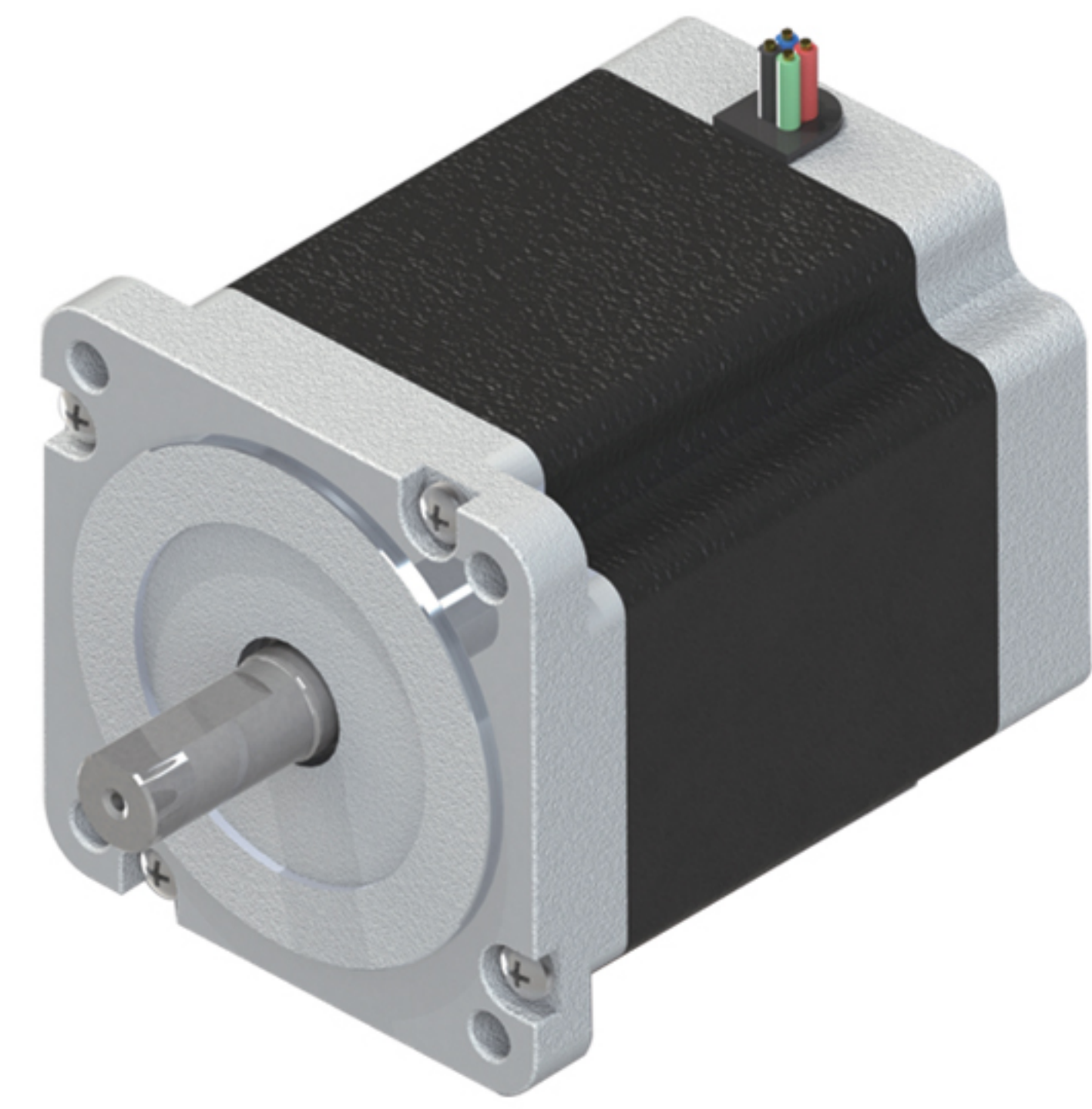


86H2F系列步进电机

86H2F Series stepping motor

步距角 Step Angle	1.8°
绝缘电阻 Insulation Resistance	500V DC 100MΩ Min
绝缘强度 Dielectric Strength	1000V AC 50Hz 2mA 1Minute
环境温度 Ambient Temperature	-20~+40°C
温升 Temperature Rise	80K Max
绝缘等级 Insulation Class	B



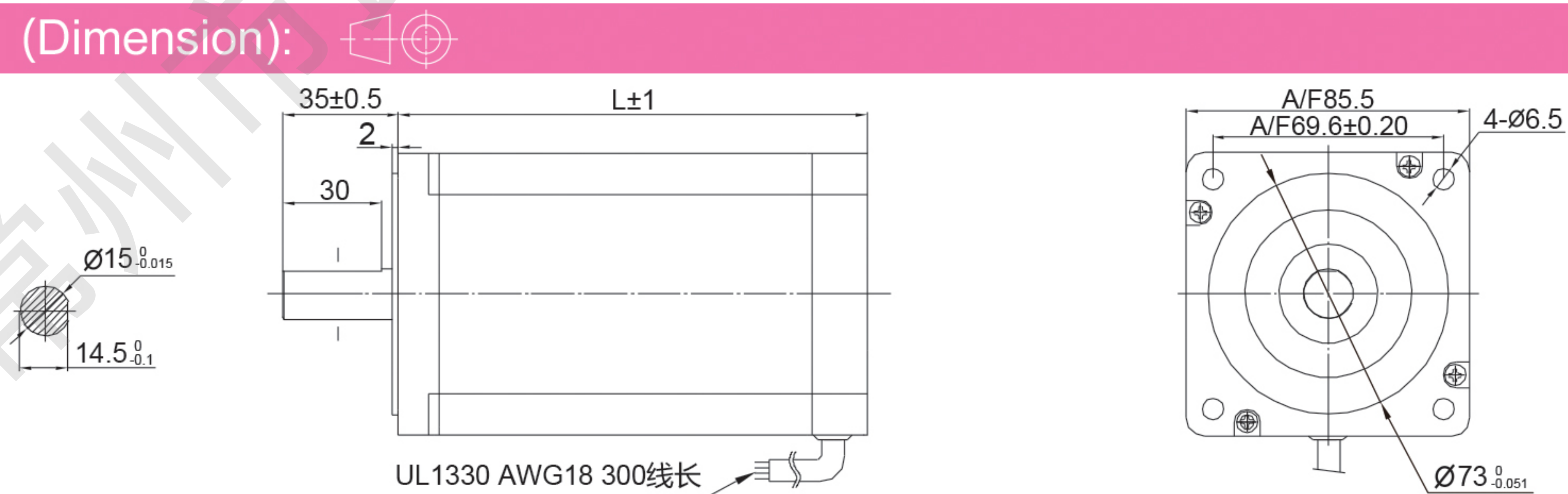
产品性能参数(Electrical specification):

86H2F 双极性

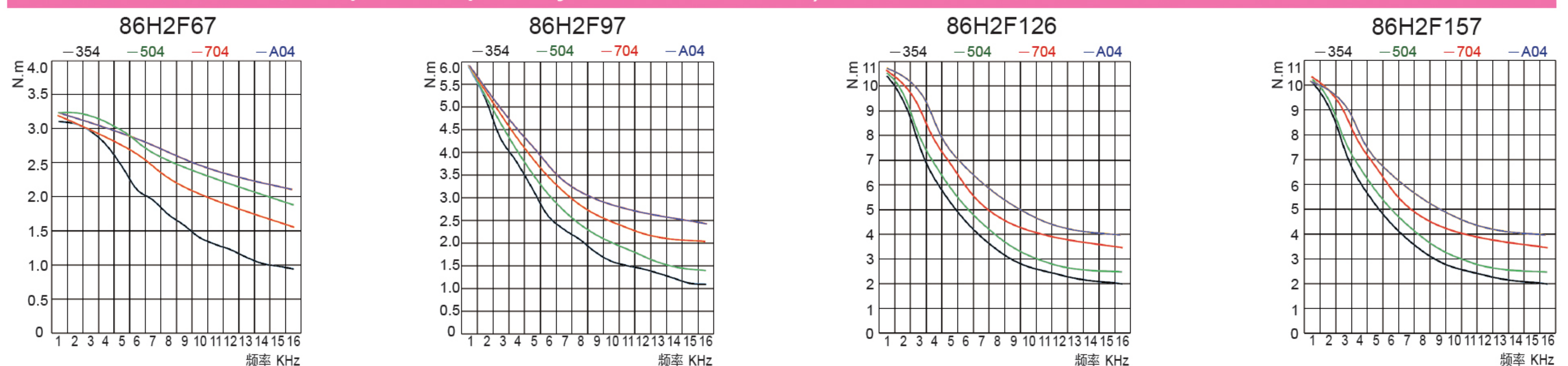
型号	机身长度 mm	额定电压 V	额定电流 Amps	绕组电参数 @20°C Typ.		静力矩		转子惯量		电机质量	
				Ohms	mH	N.m	oz-in	g.cm ²	oz-in ²	Kg	Lbs
86H2F67-354	67	3.36	3.5	0.96	9.5	3.8	540	915	5.0	1.6	3.5
86H2F67-504		2.4	5.0	0.48	4.5	3.8	540	915	5.0	1.6	3.5
86H2F67-704		1.82	7.0	0.26	2.4	3.8	540	915	5.0	1.6	3.5
86H2F67-A04		1.4	10	0.14	1.2	3.8	540	915	5.0	1.6	3.5
86H2F97-354	97	4.69	3.5	1.34	16	7.2	1000	1480	8.1	2.7	6.0
86H2F97-504		3.05	5.0	0.61	8	7.2	1000	1480	8.1	2.7	6.0
86H2F97-704		2.52	7.0	0.36	4	7.2	1000	1480	8.1	2.7	6.0
86H2F97-A04		1.9	10	0.19	2	7.2	1000	1480	8.1	2.7	6.0
86H2F126-354	126	5.25	3.5	1.5	20	9.8	1400	2200	12	3.8	8.4
86H2F126-504		3.6	5.0	0.72	9.5	9.8	1400	2200	12	3.8	8.4
86H2F126-704		2.66	7.0	0.38	4.5	9.8	1400	2200	12	3.8	8.4
86H2F126-A04		2.2	10	0.22	2.3	9.8	1400	2200	12	3.8	8.4
86H2F157-354	157	6.3	3.5	1.8	25	13.2	1869	3740	17	4.9	11
86H2F157-504		4.5	5.0	0.9	12	13.2	1869	3740	17	4.9	11
86H2F157-704		3.29	7.0	0.47	6.3	13.2	1869	3740	17	4.9	11
86H2F157-A04		2.4	10	0.24	2.9	13.2	1869	3740	17	4.9	11

以上产品可根据客户要求定制。
Above Products can be customized according to customer requirement.

外形尺寸 (Dimension):



运行矩频特性 (Torque-frequency Characteristic):



注意：装配时，须保证电机轴和负载轴的同心，严禁敲打，以免损坏电机。
Note: When installing the motor, must ensure that the motor shaft and load shaft concentric, never hit it, so as not to damage the motor.